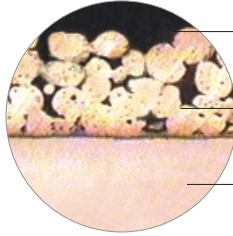
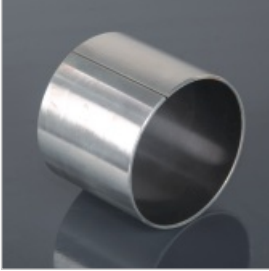


## VSB10

## 碳钢基无油润滑轴承

## CARBON-BASED NON-OIL LUBRICATED BEARINGS



聚四氟乙烯耐磨层  
PTFE Lining 0.01~0.03mm

多孔烧结铜粉层  
Porous Bronze Powder 0.20~0.30mm

低碳钢  
Low Carbon Steel

## 结构特性及用途

## Structure Characteristics and Applications

VSB10自润滑复合轴承，剖面结构（见上图）：钢背提供机械强度和承载能力，中间烧结球形多孔青铜粉，与表面聚合物（PTFE+Pb）牢固嵌合。它充分发挥了金属和聚合物的优点，具有低摩擦系数、良好的耐磨性和自润滑性能。钢背表面镀层防腐蚀，广泛应用于印刷机械、纺织机械烟草机械、健身器、减振器等。

VSB10 (see the above profile picture) is backed with copper-plated steel with porous bronze sintered on the steel and polymers imbedded into the bores of the bronze. The steel back provides the bush made by VSB10 with stronger mechanic strength and load capability. By combining the metals and the polymers together, its products are endowed with the lower friction coefficient and good capacity of anti-abrasion and self-lubrication. Moreover, the steel back is plated with a erosion-prevention layer. Products of VSB10 series are widely applied in printing, weaving and tobacco producing machines, gymnastic equipments, rock absorbers, etc.

## 物理机械性能

## Physical and Mechanical Performance

性能指标 Performance Index		有关数据 Data	性能指标 Performance Index		有关数据 Data
最大承载压力P Max Load	静载 Static Load	250 N/mm <sup>2</sup>	摩擦系数 $\mu$ Friction Coefficient	脂润滑 Grease Lubrication	0.08~0.20
	动载 Dynamic Load	140 N/mm <sup>2</sup>		油润滑 Oil Lubrication	0.02~0.07
最大线速度V Linear Velocity	振动 Oscillation Load	60 N/mm <sup>2</sup>	相配轴 Mating Axis	硬度 Hardness	> 120 HB
	脂润滑 Grease Lubrication	2.5 m/s		粗糙度 Roughness	Ra=0.4~1.25
最高PV值 Max PV value	油润滑 Oil Lubrication	5m/s	工作温度 Working Temperature		-200~+280 °C
	脂润滑 Grease Lubrication	3.6 N/mm <sup>2</sup> .m/s	导热系数 Heat-conducting Coefficient		40 W/(m·k)
	油润滑 Oil Lubrication	50 N/mm <sup>2</sup> .m/s	热膨胀系数(轴向) Heat-expansion Coefficient(Axial)		11×10 <sup>-6</sup> K <sup>-1</sup>